

# LANTANA HOMES PLAT 3

A PLANNED UNIT DEVELOPMENT

PALM BEACH COUNTY, FLORIDA

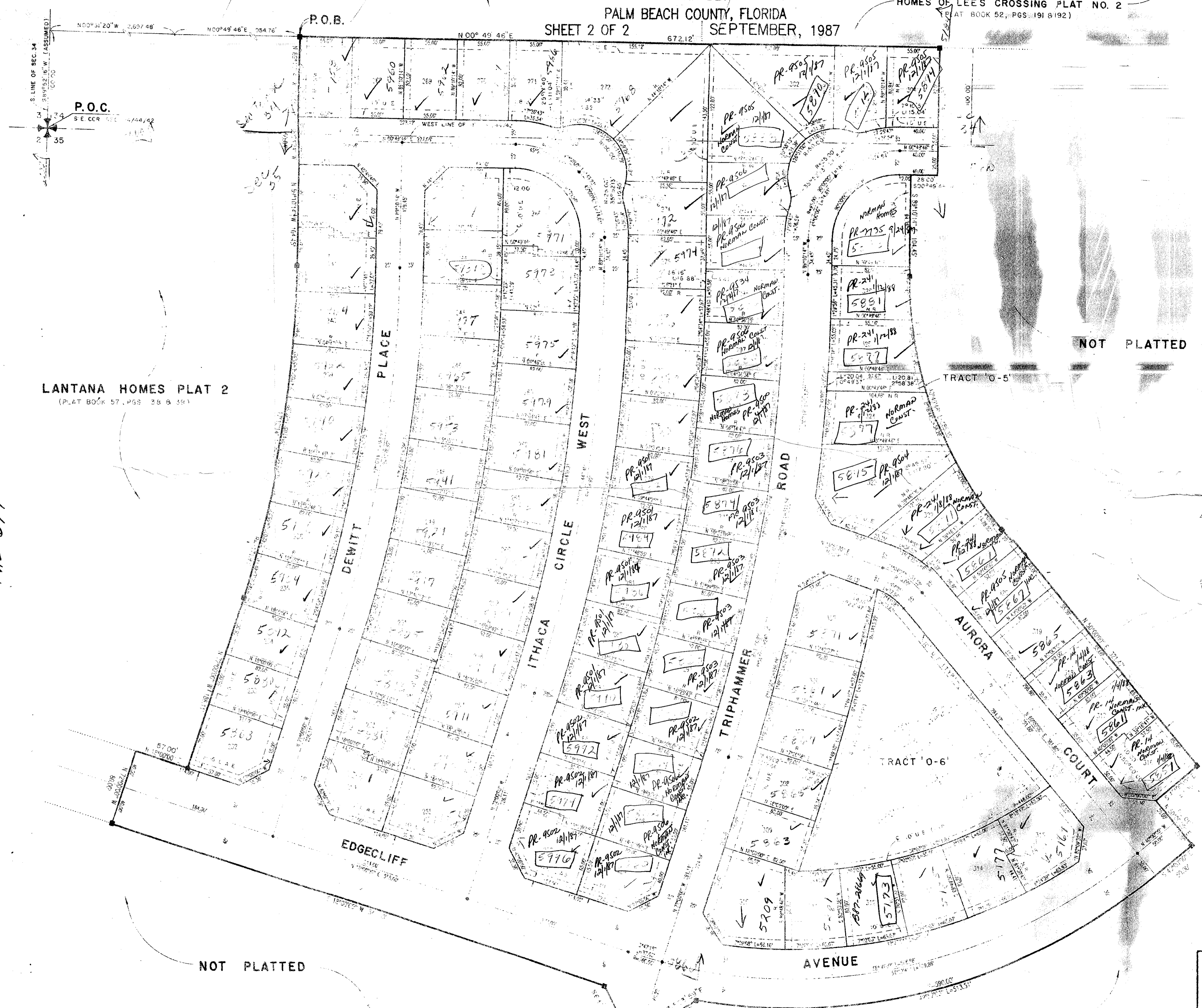
SHEET 2 OF 2 SEPTEMBER, 1987

HOMES OF LEE'S CROSSING PLAT NO. 4  
(PLAT BOOK 48, PGS. 142-148)

HOMES OF LEE'S CROSSING PLAT NO. 2  
(PLAT BOOK 52, PGS. 191 & 192)

# 170

STATE OF FLORIDA  
COUNTY OF PALM BEACH  
This Plat was first for record at  
M. this day of 1987  
and duly recorded in Plat Book No.  
on Page  
John B. Dunke, Clerk of the Circuit Court,  
By \_\_\_\_\_ D.C.



34-35/44/42  
DIVISION # Lantana Homes  
57 TRACT 170 51-170A  
33 51-170B 35-170B  
PUD 247-418 RS  
33463  
PLAT 3  
THZ 349

NOT PLATTED

LANTANA HOMES PLAT 2  
(PLAT BOOK 57, PGS. 38 & 39)

TRACT 'O-5'

TRACT 'O-6'

GRAPHIC SCALE 1"=50'

Pet. 84-61

ADD. BY  
CHECKED BY

57/170 04/21-003

Landmark Surveying & Mapping Inc.  
1850 FOREST HILL BOULEVARD  
PH: (705) 433-5405 SUITE 200 W.P.B. FLORIDA

**LANTANA HOMES PLAT 3**

NOT PLATTED

NOT PLATTED